

# *Connecticut Siting Council*



## **Connecticut Association of Wetland Scientists**

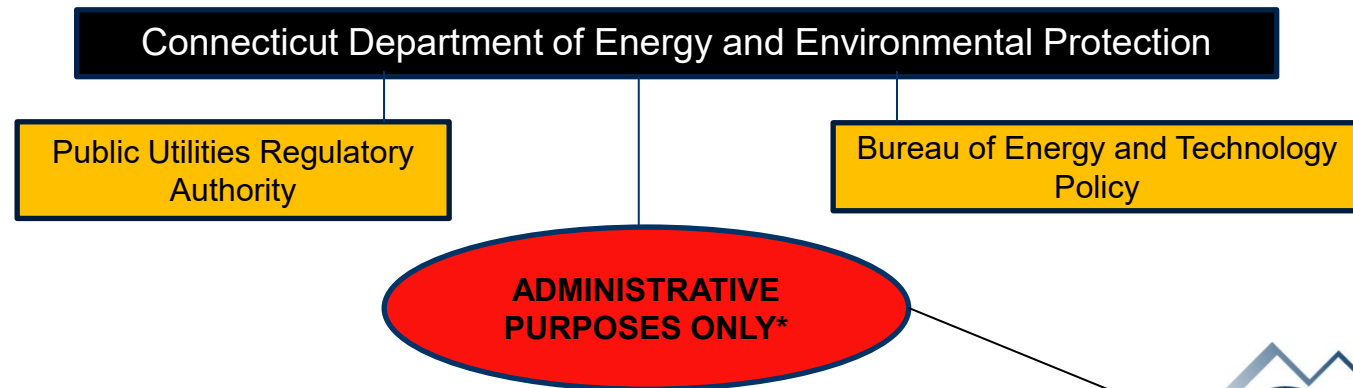
March 7, 2024

Melanie Bachman - Executive Director/Staff Attorney  
Robert Mercier – Siting Analyst II



# What is the Connecticut Siting Council?

- Established under Public Act 71-575, “Public Utility Environmental Standards Act,” to regulate construction, operation and maintenance of energy and telecommunications infrastructure on a statewide basis.
- Exclusive jurisdiction over electric transmission lines, fuel transmission lines, electric generating facilities, substations and telecommunications towers.



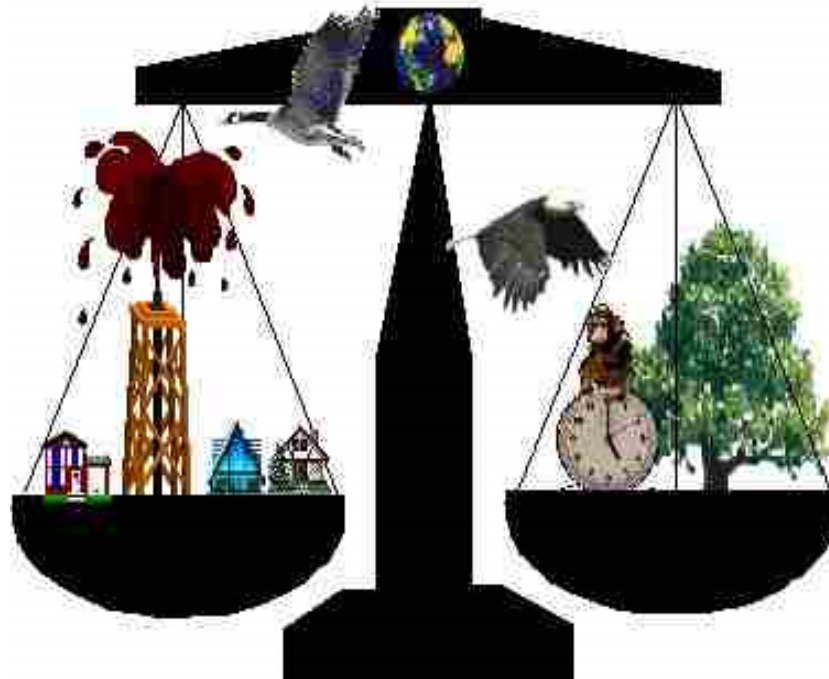
\*Conn. Gen. Stat. §4-38f (2023)



# Connecticut Siting Council Purpose

To balance the need for:

Adequate and reliable public utility services at the lowest reasonable cost to consumers



Need to protect the environment and ecology of the state

## Who are the members?



CSC consists of 9 **per diem** members:

- 5 public members appointed by Governor (1 is Chair)
- DEEP Commissioner, or designee
- PURA Chairperson, or designee
- Speaker of the House designee
- President Pro Temp of Senate designee

# Telecommunications Facilities Jurisdiction



- Community antenna television towers and head-end structures
- Telecommunications towers and associated equipment that are used in a cellular system
- Distributed Antenna Systems and Small Cell facilities
- Collocations or shared use of existing towers or structures
- Modifications to existing telecommunications towers and associated equipment



## Jurisdictional to CSC



Transmission Line  
structure mounted  
antenna arrays



Small cell  
installation  
concealed in  
faux chimney



Free Standing  
Telecommunications  
Towers

# Energy Facilities Jurisdiction



## Applications for Certificates

- New lines, substations or hybrids at 69-kV and above
- Overhead, underground and submarine cables
- ISO-identified Reliability Projects
- Must find and determine a **public need** for facility

## Petitions for Declaratory Rulings

- Modifications to existing facilities
- ISO-identified Reliability Projects
- Asset Condition List
- Compliance with National Electrical Safety Code standards
- Physical Site Security

**Public Need** = necessary for the reliability  
of the electric power supply of the state



# Jurisdictional to CSC



Nuclear generating facilities concurrent with USNRC



Electric Transmission Lines



Transmission substations

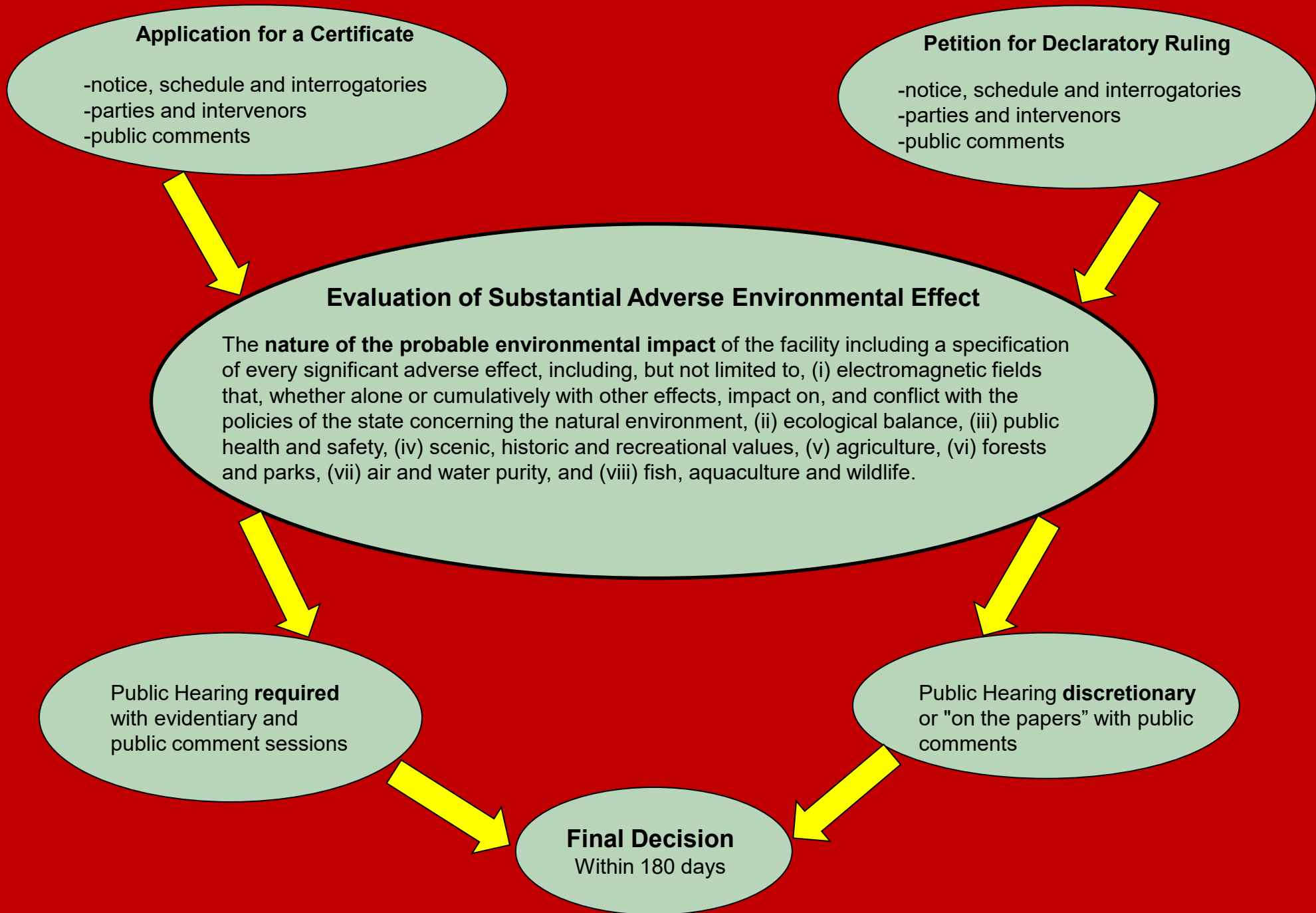


Electric Generating Facilities



Submarine cables for off-shore wind interconnections





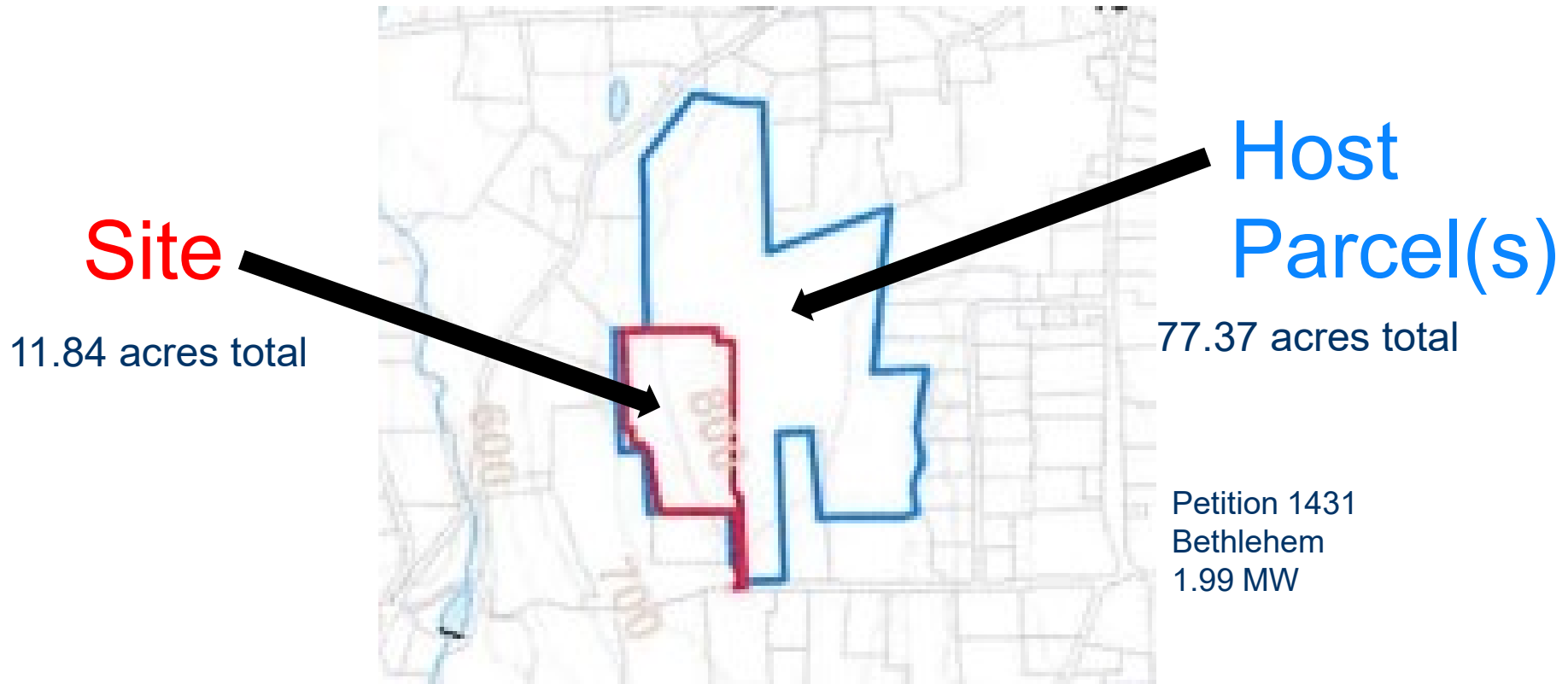
# Consultation with Federal, Regional and State Agencies



Public Utilities  
Regulatory  
Authority



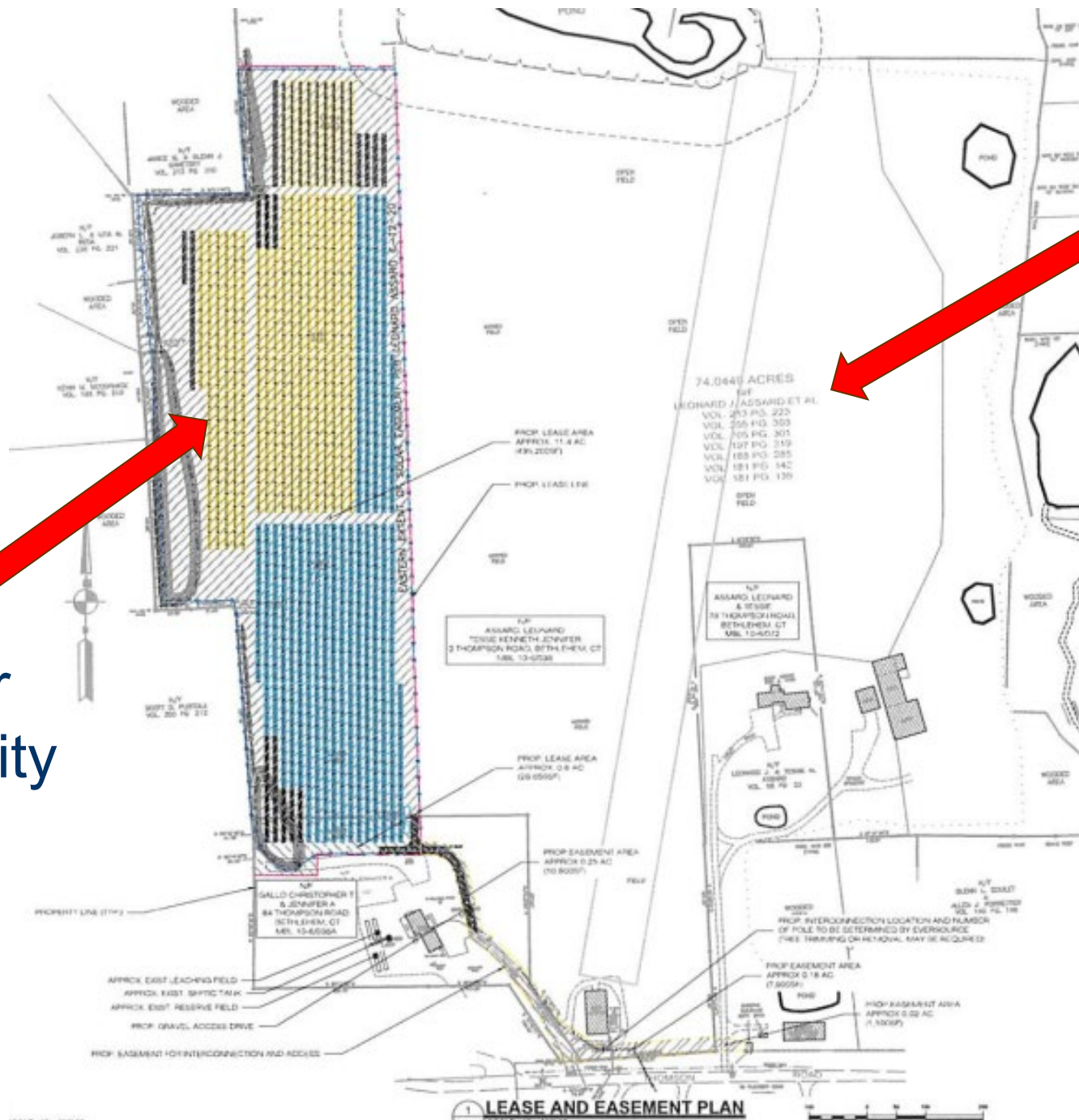
**“Site”** means a contiguous parcel of property with specified boundaries, including, but not limited to, the leased area, right-of-way, access and easements on which a facility and associated equipment is located, shall be located, or is proposed to be located.



**The Siting Council cannot compel a property owner to sell or lease property, or any portions thereof.**



Solar  
Facility  
Site



Private  
Property

Petition 1431  
Bethlehem  
1.99 MW

# Public Participation



# Connecticut Siting Council

## Filing Guides – Environmental Considerations

### 3. Environmental Considerations

- a. Compliance with air emissions rates, including carbon dioxide and any other greenhouse gasses, and compliance with applicable DEEP regulations;
- b. Water consumption and discharge rates;
- c. FEMA Flood Zone information and associated flood mitigation plans;
- d. Proximity to DEEP Aquifer Protection Areas;
- e. DEEP groundwater classification underlying the site property;
- f. FAA determination regarding air navigation hazard and plume analysis;
- g. Number of trees 6 inches in diameter or greater that will be cleared or the total acreage of tree clearing, including a breakdown of tree clearing by upland versus wetland areas;
- h. DEEP Natural Diversity Database (NDDDB) consultation correspondence and analysis of federally-listed species (ex. Northern Long-Eared Bat);
- i. Wetland and Watercourse Analysis Report and map, and associated Wetland and Watercourse Impact Mitigation Plan;
- j. Vernal Pool Analysis Report and map, and associated Vernal Pool Impact Mitigation Plan; and
- k. Analysis of any visual impacts including, but not limited to, nearest residence, and any proposed mitigation plans, such as vegetative screening.





# **Bridgeport Seaside Landfill 2.2 MW Solar Facility (and 2.8 MW Fuel Cell Facility) Petition 1104 (2015)**



# United Illuminating – Pootatuck Substation, Shelton Docket No. 433 (2013)





# **Tobacco Valley Solar - Simsbury 26.4 MW Solar Facility Petition 1313 (2017)**



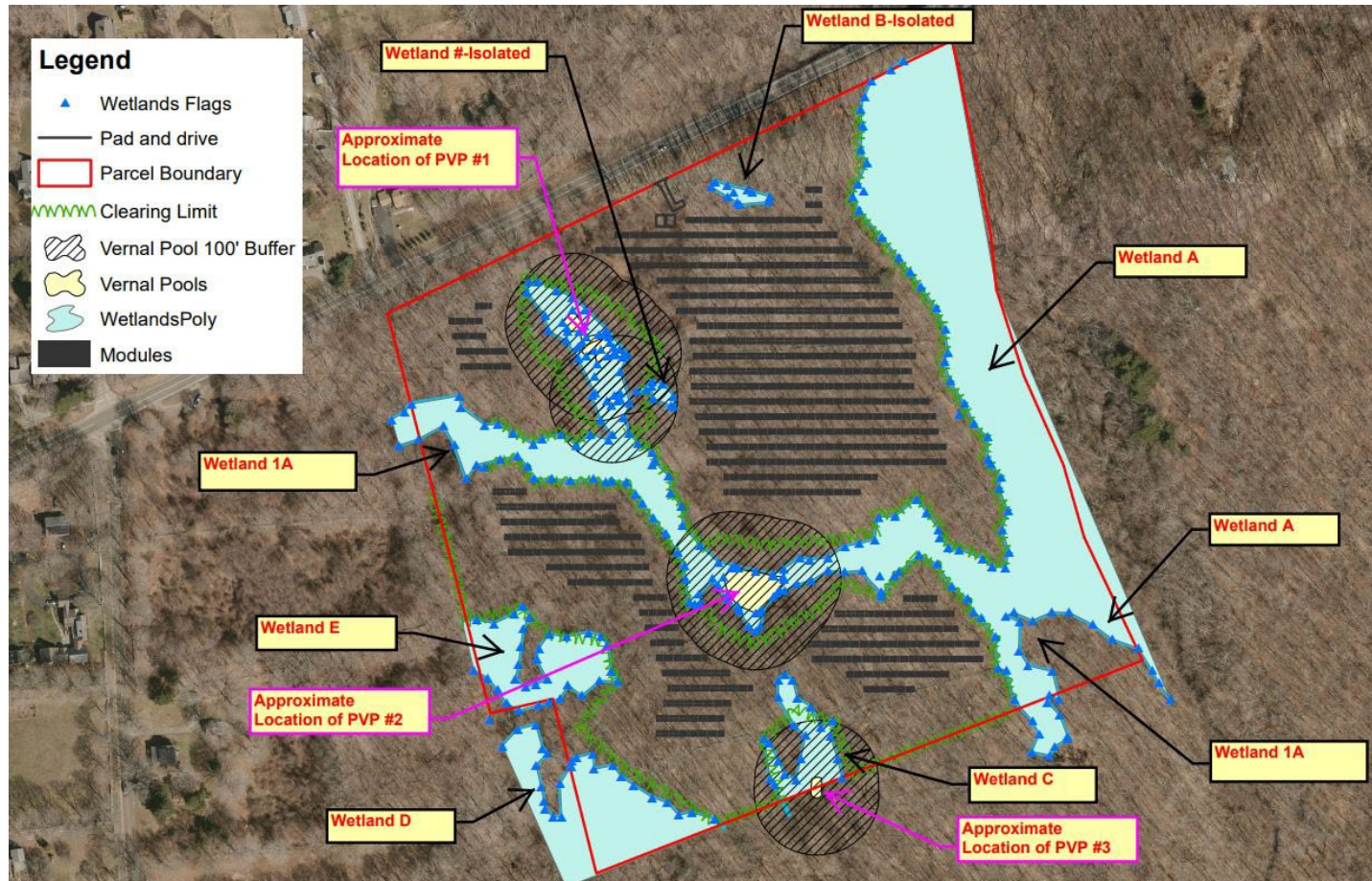


# Green Street Power Partners - Middletown/Middlefield 1.99 MW Solar Facility Petition 1367 (2019)

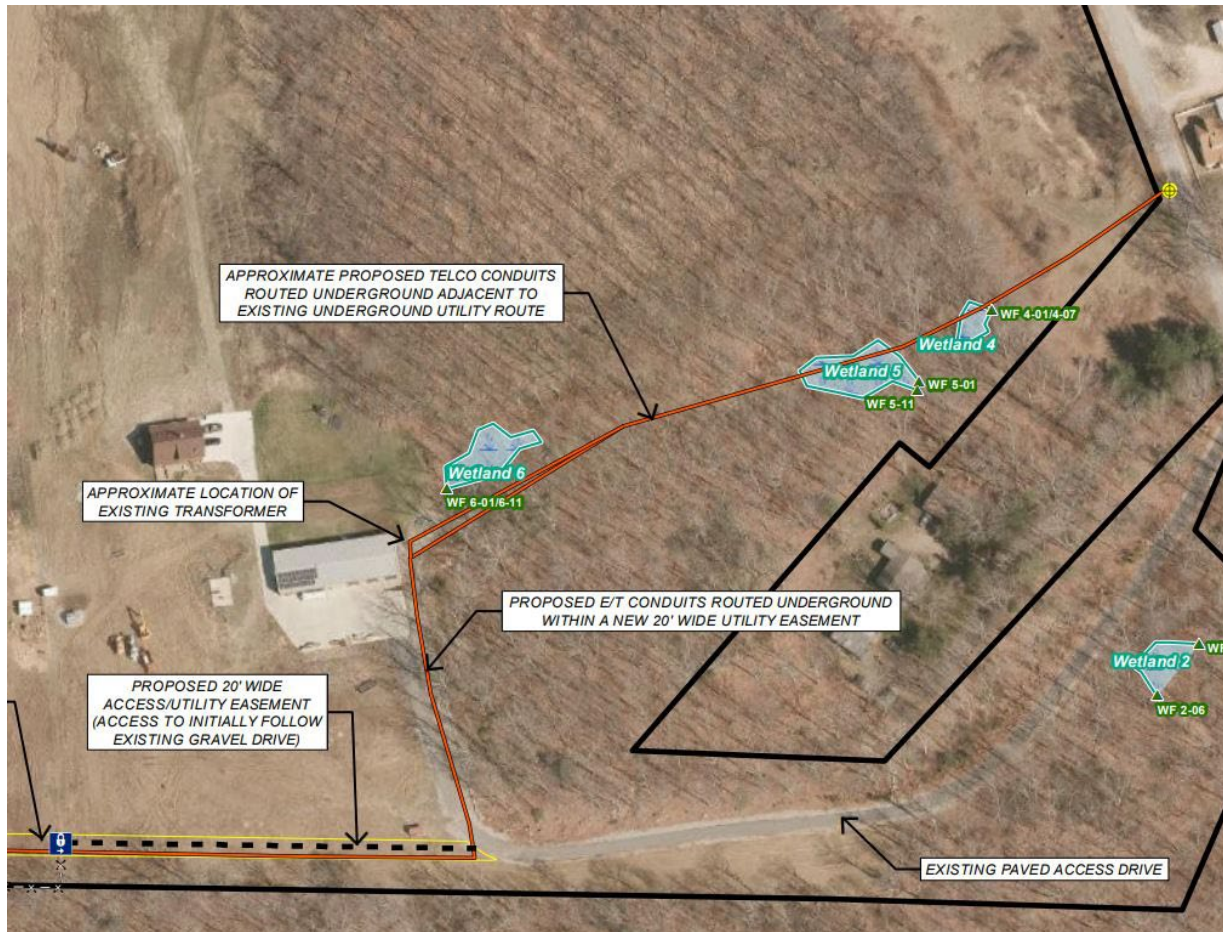




# Chatfield Solar – Killingworth 1.98 MW Solar Facility – Wetland Map Petition 1354 (2019)



# Cell Tower – Canterbury Wetland Map Docket 477 (2018)





# Cell Tower – Canterbury Wetland Impact Docket 477 (2018)









# Interstate Reliability Project – Thompson Wetland Matting Docket 424 (2012)

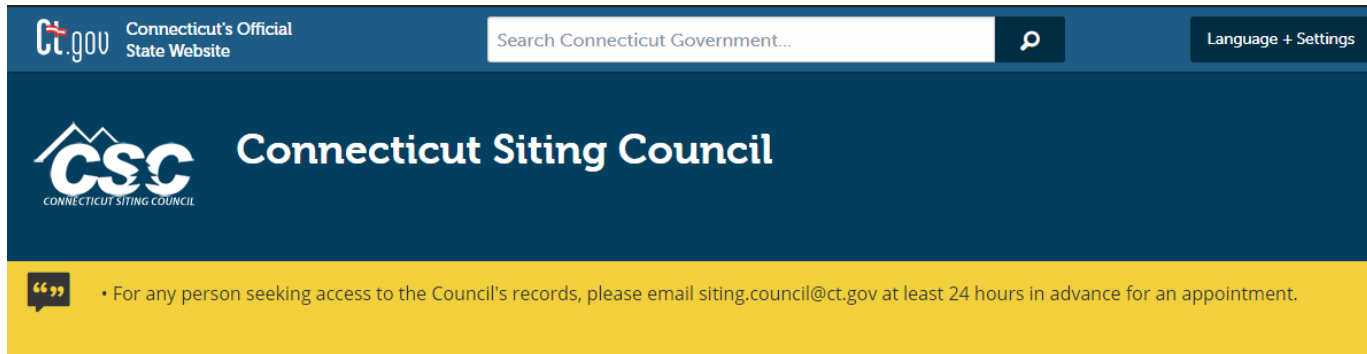








**CSC Website: [portal.ct.gov/CSC](https://portal.ct.gov/CSC)**  
**CSC E-mail: [siting.council@ct.gov](mailto:siting.council@ct.gov)**

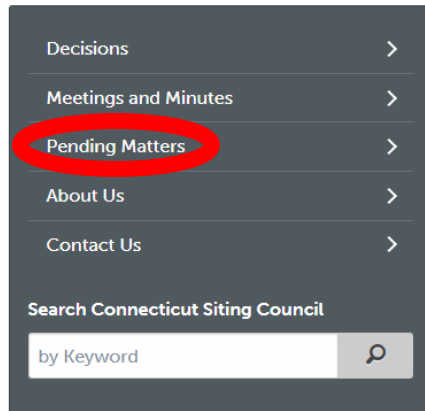


CT.gov Connecticut's Official State Website Search Connecticut Government... Language + Settings

**CSC** Connecticut Siting Council  
CONNECTICUT SITING COUNCIL

• For any person seeking access to the Council's records, please email [siting.council@ct.gov](mailto:siting.council@ct.gov) at least 24 hours in advance for an appointment.

[CT.gov Home](#) / [Connecticut Siting Council](#)



- Decisions >
- Meetings and Minutes >
- Pending Matters >**
- About Us >
- Contact Us >

Search Connecticut Siting Council

by Keyword

### Most Popular

- [CSC Calendar of Events](#) >
- [Filing Guides](#) >
- [Telecommunications Database](#) >
- [Public Participation](#) >
- [Audio Link to New Britain Hearing Rooms](#) >

