

“FIRST MEADOWS” INVASIVE PLANT MANAGEMENT

Macricostas Preserve, New Preston, CT



Steep Rock Association

...to conserve ecologically and historically significant landscapes and riparian corridors in and around Washington, CT, and to enhance the community's connection to nature through outreach, education, and passive recreation



...meeting the highest national standards for excellence and conservation permanence

Conservation Impact

Total Protected: 5,990 acres

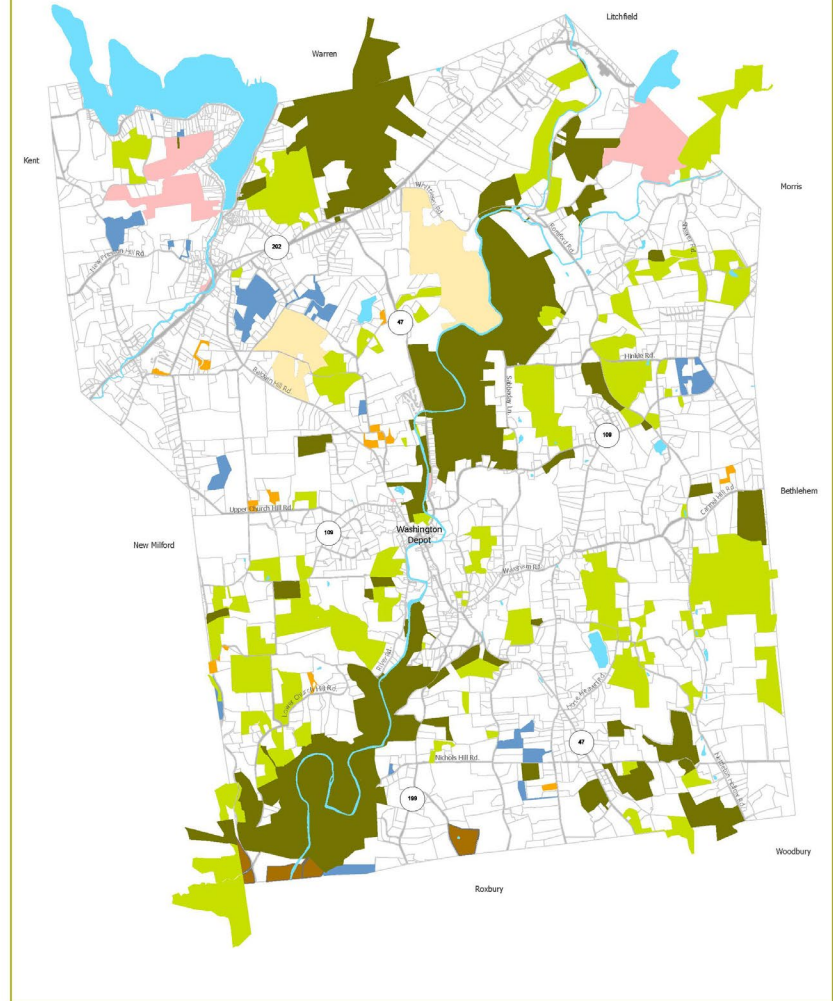
Total Owned: 3,206 acres

Critical Habitat Types: 13

Connecticut Listed Species: 41



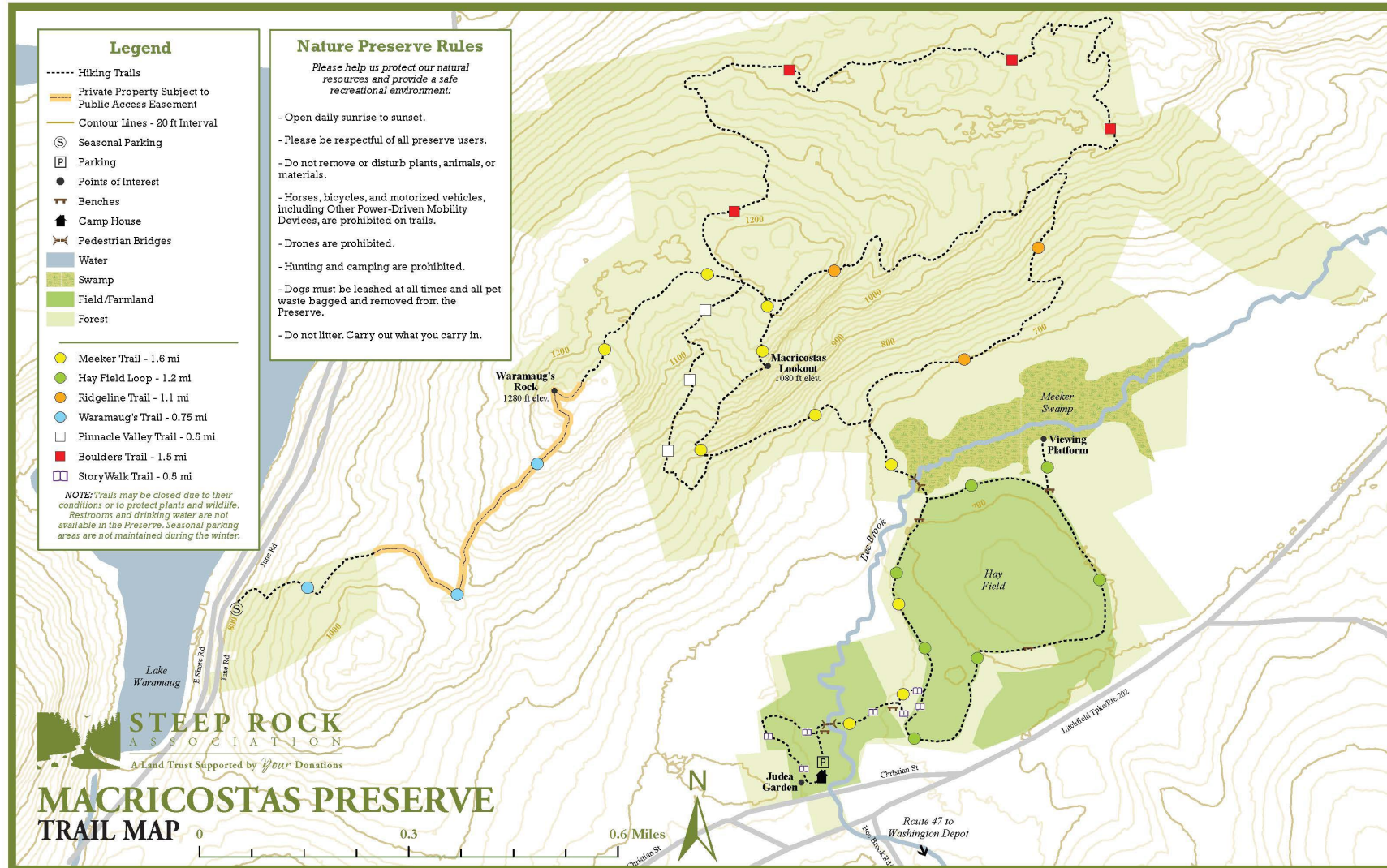
Protected Areas Washington CT



- Steep Rock Association Preserves
- Steep Rock Association Easements
- Roxbury Land Trust
- Northwest CT Land Conservancy
- Town of Washington Easements
- CT DoAG Easements
- CT State Parks

Updated January 2025
Map prepared by:
Rory Leno
Director of Conservation
Steep Rock Association
It is for reference only
and contains no authoritative data.

Macricostas Preserve



Invasive Species Management Plan

- Survey and map existing invasive plant stands and develop a ranking system to prioritize management
- Catalog previous invasive management efforts
- Determine BMPs for control of individual species
- Identify a management objective, schedule, and required resources for each stand



Management Prioritization

Invasiveness Potential (20%)

- Early detection and NYIS.INFO ranking

Extent and Scope of Stand (20%)

- Small occurrences of new species and satellite populations

Environmental and Natural Resources Considerations (30%)

- Threat to critical habitat and flora/fauna

Public and Human Health Considerations (5%)

- Risk within high priority trails and use areas

Control and Restoration Feasibility (20%)

- Effective, efficient management

Management Investment (5%)

- Actively managed stands that require continued stewardship

= Invasive Stand Priority Score



“First Meadows” Management



Invasive Plant Stand #7

STAND DETAILS

Macricostas Preserve
Management Unit 23: Macricostas Meadows
First Meadows

Species: Reed Canary Grass/Phragmites
Density: High
Acreage: 0.82

Invasive Stand Priority Score (ISPS): 3.36

MANAGEMENT SUMMARY

Objective: Eradication

Timeframe: 2019-2026

Strategy: Early season foliar herbicide application and distribution mapping performed annually. Contract All Habitat Services LLC. Investigate effect of beaver-induced, prolonged inundation if possible.

Permits: IW-19-13 (April 19, 2019 - 2024); IW-24-8 (March 19, 2024 - 2034)

Status: Phragmites fully eradicated. Reed canary grass distribution significantly reduced and fragmented.



Methods

- Annual mapping of RCG distribution
- Early spring herbicide treatment
 - Selective foliar application of imazapyr with low-pressure backpack sprayers
- Photo documentation of plots



Results (Plot 1)



Results (Plot 2)

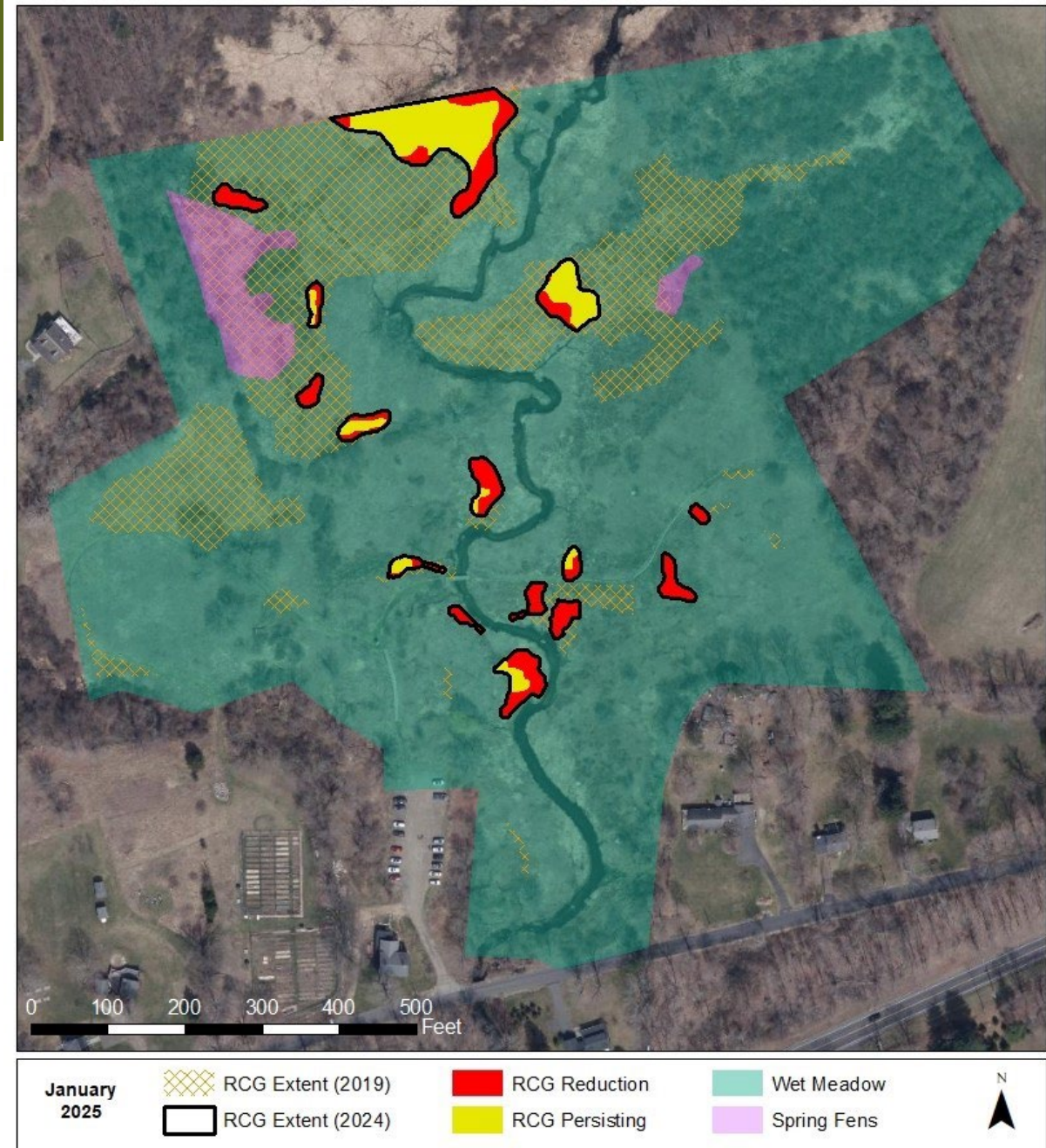


Results (Plot 3)



Results

- 91% reduction since 2019
- 53% reduction in 2024
- Complete eradication in 7/15 target areas in 2024



Acknowledgments

William H. Moorhead III

Connecticut Department of Energy and Environmental Protection

Washington Inland Wetlands Commission

All Habitat Services, LLC

Connecticut Association of Wetland Scientists

